

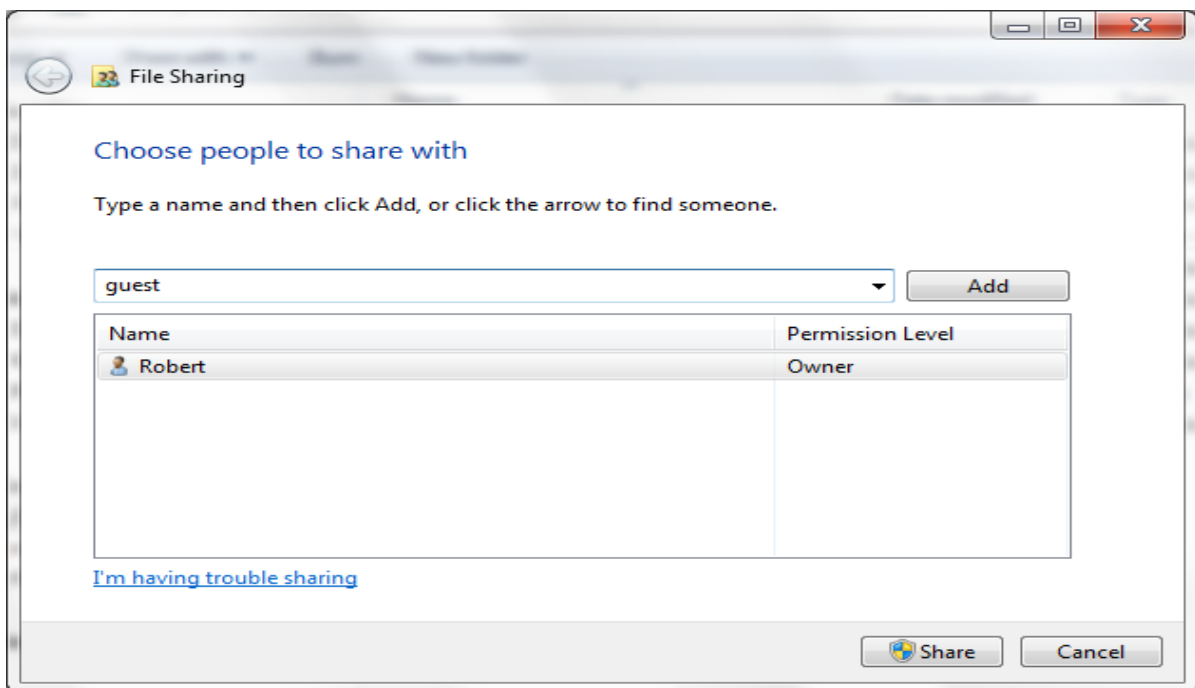
MediaStation HD DVR Windows 7 Network Shares

Overview

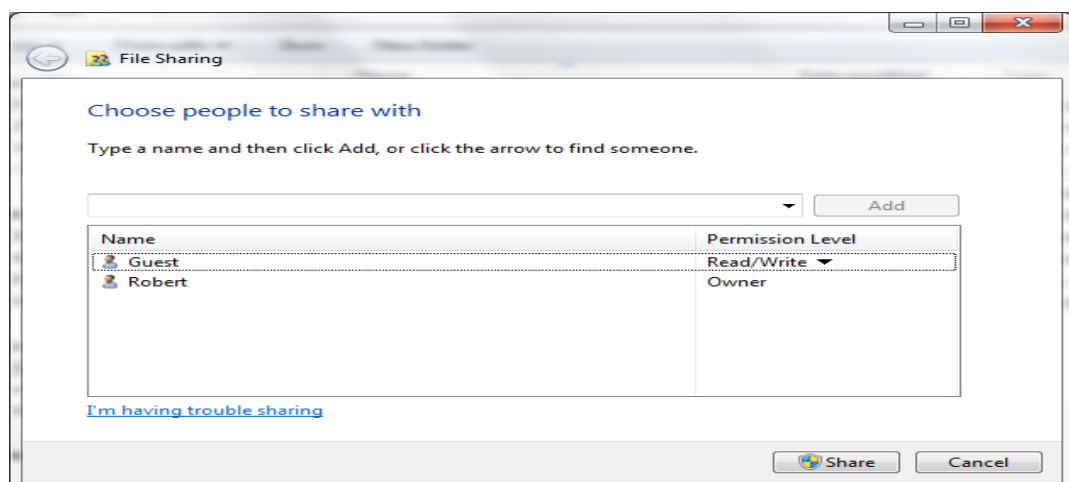
Microsoft changed the way it deals with Samba shares in Windows 7 . Windows 7 shares are no longer visible on the MediaStation by default. However by making some changes on Windows 7 it is possible to get it to work with the MediaStation. This Howto is divided into three stages. Depending on how the Windows 7 machine is setup you may not need to go through all stages.

Stage 1 – Sharing a Folder on Win 7

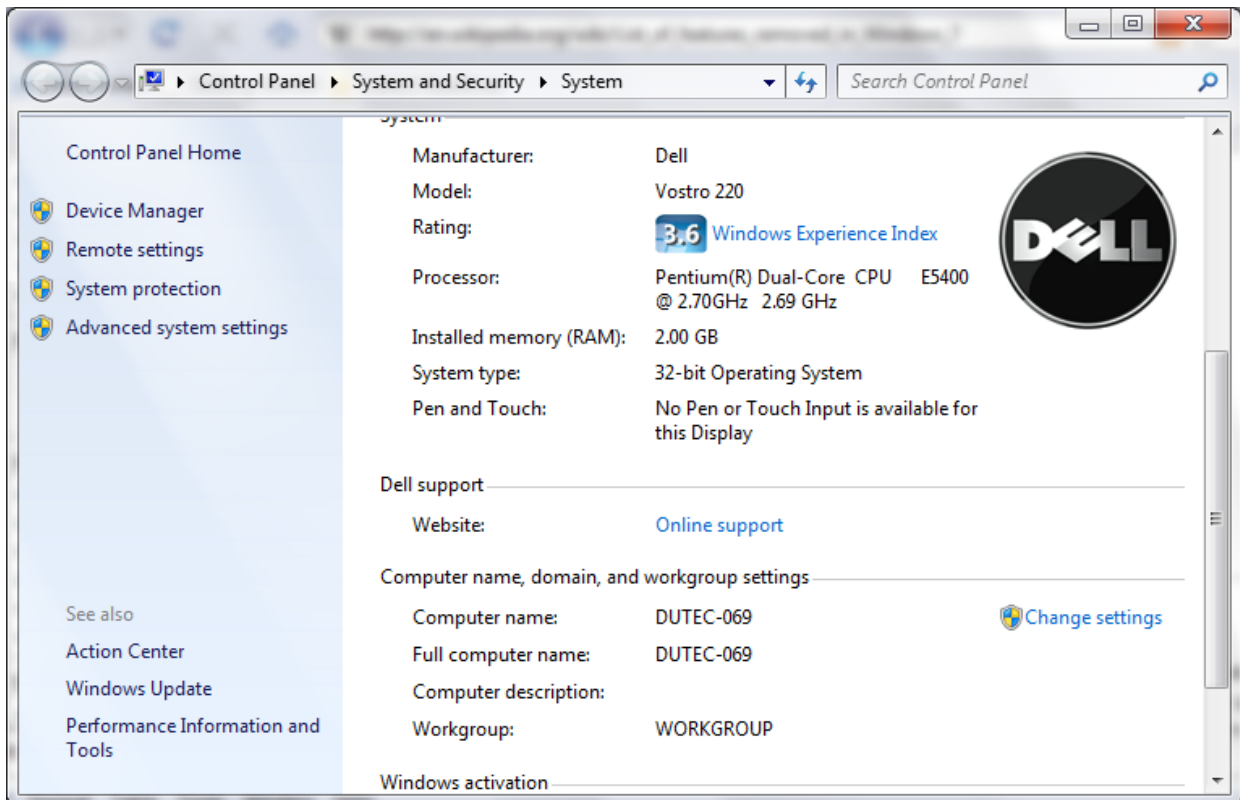
- Select a folder on the Windows 7 machine that is to be shared, or create a new one if it doesn't already exist.
- Right click on the folder and **click Share with → Specific people**
- The following dialogue box will appear.



- Type guest into drop down list and click the Add button to allow this user to connect.
- You can edit the Permission Level to Read or Read/Write to allow full access to this share.



- When you have edited the Permission Level, press the Share button to share this folder.
- Before connecting from the MediaStation, you will need to know the computer name and the workgroup of the Windows 7 machine.
- Click the **Start button** → **Right Click Computer** → **Select Properties**
- This will open a window similar to below:



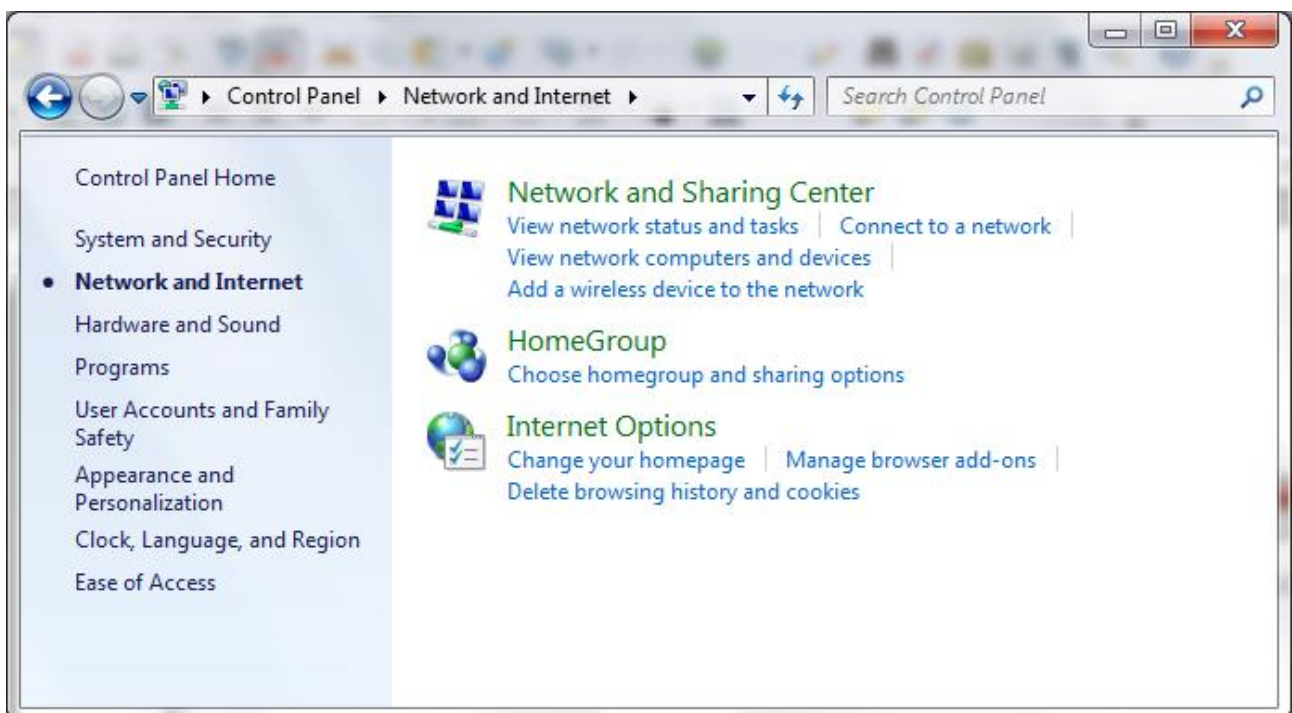
- Here you should be able to find the computer name and the workgroup name. The workgroup is normally called WORKGROUP.
- Note both of these
- Reboot the PC and MediaStation and you should now be able to connect to the Windows 7 share from the MediaStation.
- From the MediaStation press the **Browser** button on the remote.
- Under the All tab scroll down to Net and select it by pressing **Enter** on the remote
- Select your workgroup that you noted earlier from your windows PC.
- Then select your PC from the list, the Computer name from earlier.
- You should now see any shares from your PC, ignore any shares that end with a \$ sign.
- These are special shares that windows uses and are not normally visible on a PC, but because the MediaStation is not a PC it shows them.
- Select your share from the list and connect to it by pressing **Enter** on the remote.
- If you are presented with a login screen at any stage – just ignore it and select OK. As we are using the guest account we don't need to provide login details.
- If you unable to connect then go to stage 2 and configure Windows 7 networking.

Stage 2 – Configure Windows 7 Networking

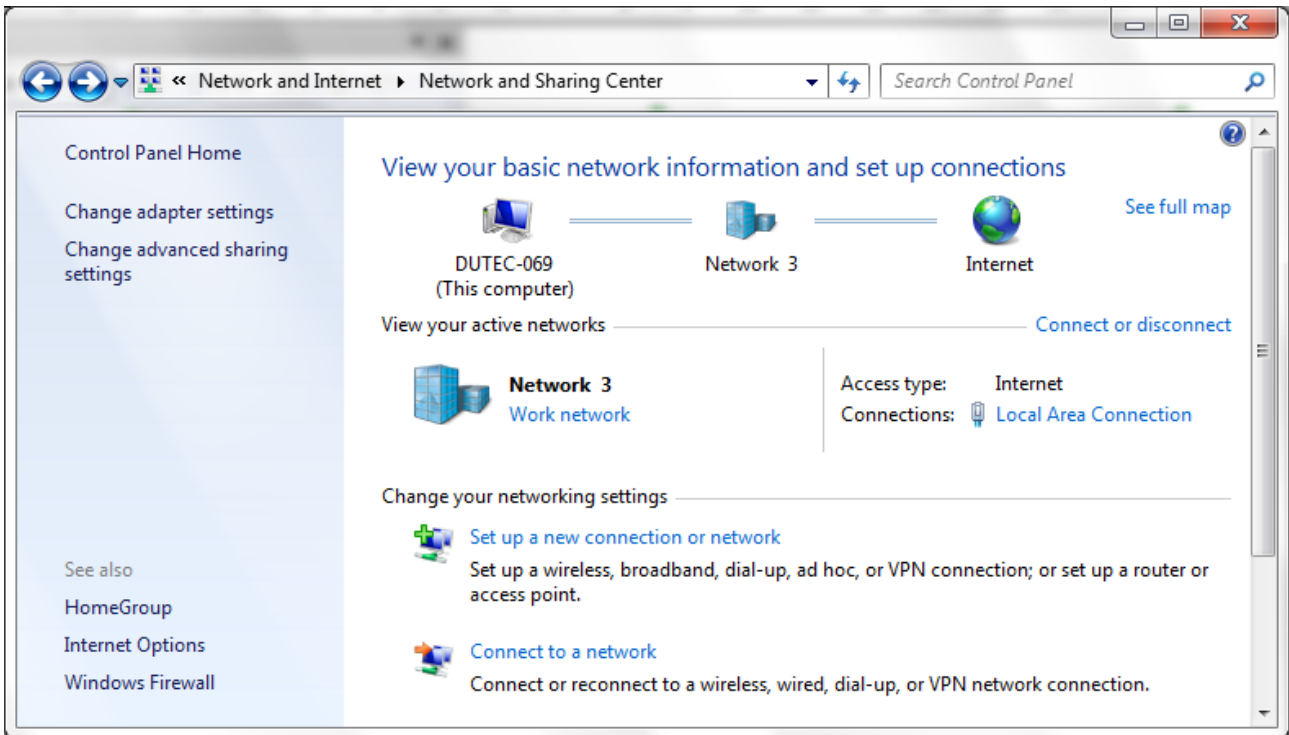
- Click Start → Control Panel → Network and Internet



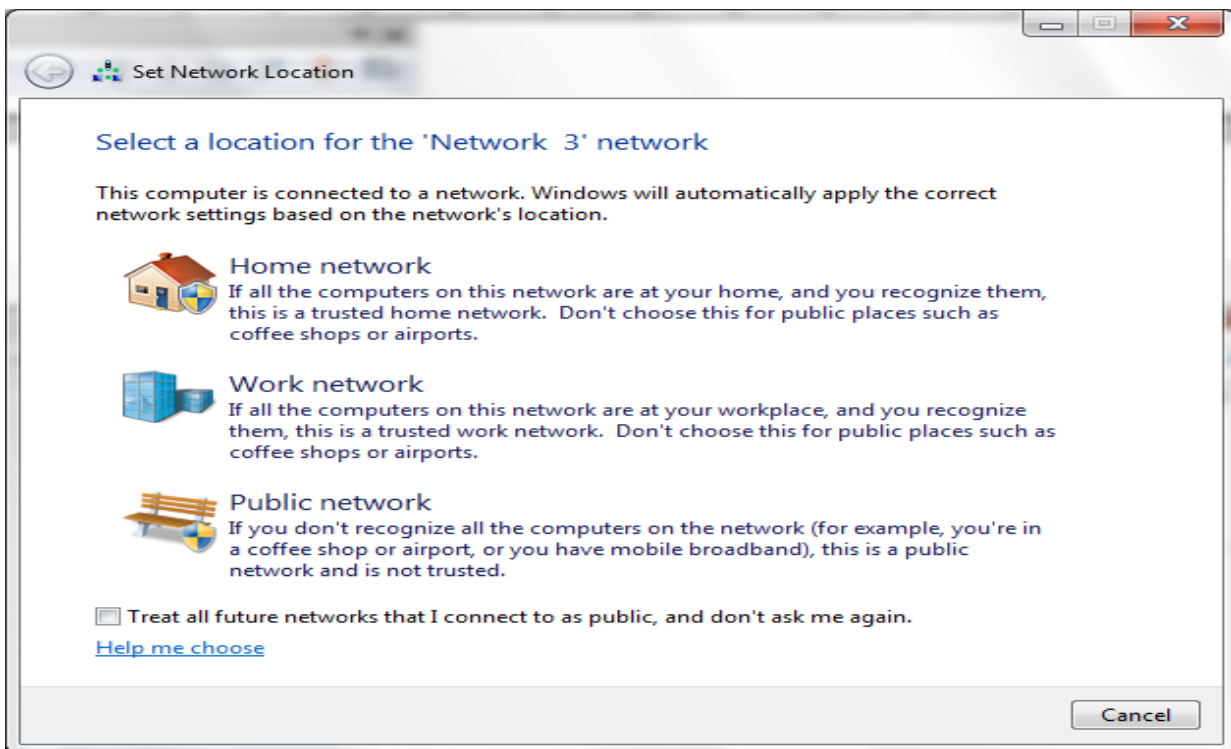
- From here open Network and Internet by clicking on Network and Sharing. This should open a window similar to below.



- Now click on Network and Sharing Center to open a window similar to below.



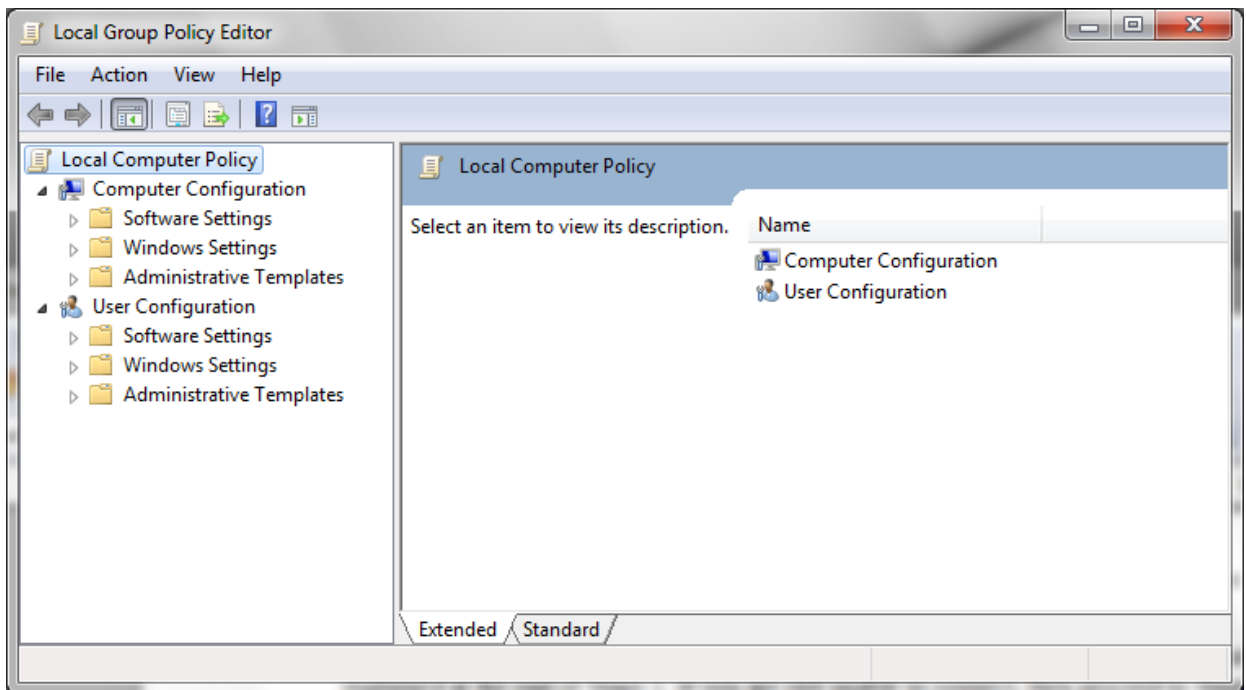
- Here you will see your computer, in this case DUTEC-069, the network it is connected to, Network 3 and also the Internet if it's available.
- On the second line you will see the network details. Under it you will see the network location, which in this case is Work network.
- This must be either Home network or Work network. If it says Public network, change it to either Home or Work network by clicking on it to open the following window.



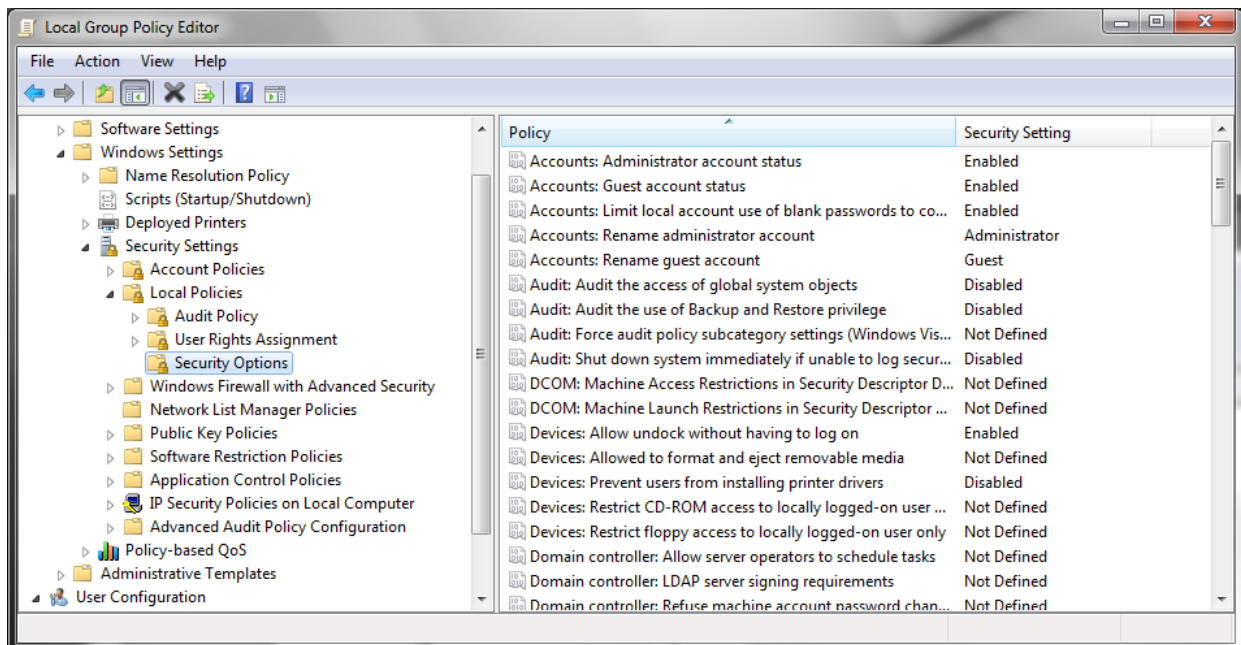
- Here you can select either Home or Work as the network.
- When you have done this return to the **Network and Sharing Center** and verify that you have either Work or Home as the network location.
- In the **Network and Sharing Center** now select **Change advanced sharing settings** from the right hand side of this window.
- In the window that opens verify that the current profile is either Work or Home. It should say Home or Work(current profile).
- Network discovery should be On.
- File and printer sharing should be On.
- Public folder sharing should be Off.
- File sharing connections should be set to 128 bit.
- Password protected sharing should be Off.
- HomeGroup connections should be set to: Use user accounts and passwords to connect to other computers.
- When you have made this changes click on the **Save changes** button to save your new settings.
- You can now reboot your MediaStation and PC and try connection from the MediaStation as explained at the end of Stage 1. If you are still unable to connect, then proceed to Stage 3.

Stage 3 – Advanced configuration

- **Click Start and enter gpedit.msc into the search box** and then press enter to open the Local Group Policy Editor.

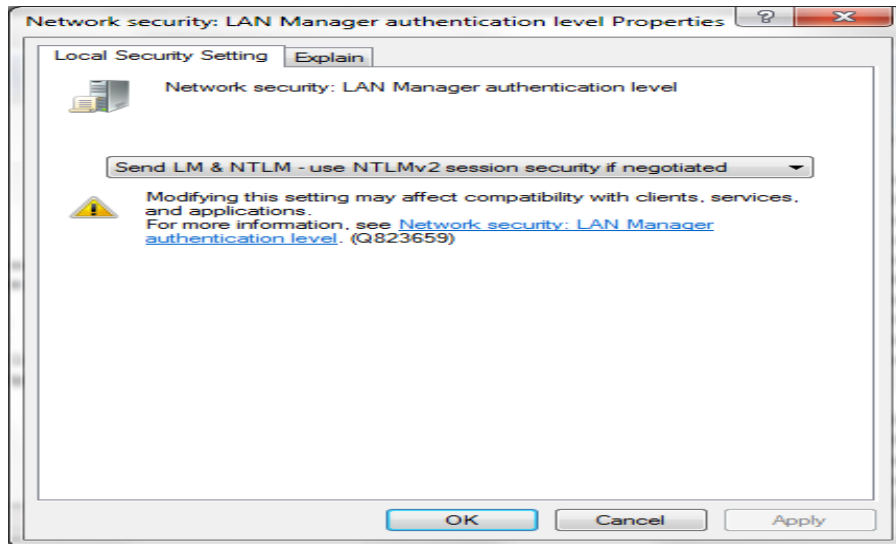


- Here you need to open **Computer Configuration** → **Windows Settings** → **Security Settings** → **Local Policies** → **Security Options**
- This will open a window similar to below.



- **In the right pane ENABLE the following policies.**
- Network access: Allow anonymous SID/Name translation Enabled
- Network access: Let Everyone permissions apply to anonymous users Enabled
- **Now DISABLE the following policies.**
- Network access: Restrict anonymous access to Named Pipes and Shares Disabled
- Network access: Do not allow anonymous enumeration of SAM accounts Disabled

- Network access: Do not allow anonymous enumeration of SAM accounts and shares Disabled
- **Now change you also need to change the following policy.**
- Network security: LAN Manager authentication level to
- Send LM & NTLM – use NTLMv2 session security if negotiated
- Do this by double clicking on the policy which will open the following window.



- You can select to correct policy from the drop down list.
- Then click OK to save your settings and then exit the Local Policy Editor.
- Reboot the PC and MediaStation and sharing should now work.